

HOW TO FIT AND INSTALL COMPOSITE SIDE PANEL CLIPS

EQUIPMENT/MATERIALS REQUIRED:

PLO04 SIDE PANEL CLIPS X8

4.3MM X 30MM SCREWS X24

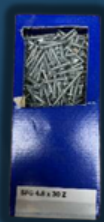
DRILL

2MM DRILL BIT

PHILLIPS SCREW DRIVER

TAPE MEASURE

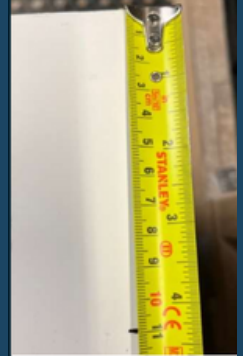
COMP DOOR SIDE PANEL X1



HOW TO FIT AND INSTALL COMPOSITE SIDE PANEL CLIPS?

STEP 1

When installing a composite side panel, it is important to check all equipment is present before fitting. Once the outer frame for the panel has been fixed within the brickwork, the PL004 side panels clips now need to be fixed to the composite side panel. There needs to be X4 PL004 Clips fixed to either side of the composite panel.



STEP 2

When fitting the clips to the panel, the small wraparound part of the clip needs to be located on the external side of the panel. The positions of the clips are as follows:

- Top Clip- 110mm down from the top of the panel to the start of the clip
- Bottom Clip- 110mm up from the bottom of the panel to the start of the clip
- 2x Middle Clips- Always fixed in equal distance to the top and the bottom based off the overall slab panel height. (Please speak to Technical @ Comp Door if unsure)



From the top of the panel down mark 110mm out using a tape measure. Place the 1st clip from the mark and then mark out for your screw holes.

HOW TO FIT AND INSTALL COMPOSITE SIDE PANEL CLIPS?

STEP 3

Once the screw holes have been marked on the clip, repeat this process for the bottom clip. Again, measuring 110mm up from the bottom of the panel to the start of the clip. Finally, mark the screw holes for the remaining two central clips. Make a note of the measurements for the central clips so that this is matched for the other side.



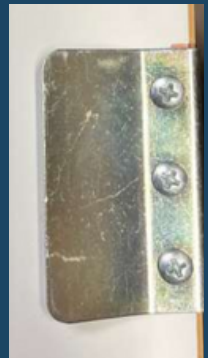
STEP 4

Now that all the screw holes have been marked up down one side of the panel. Using a 2mm drill bit, pilot approx a 30mm deep hole for all 12 screw holes.



STEP 5

Using your screwdriver fix all 12 screws down the one side of the panel using the screws supplied. Once complete, all 4 clips will be fixed to the panel. Now repeat the above steps to fix the remaining 4x clips to the other side of the panel. Ensuring the small wraparound part sits on the external side of the panel.



HOW TO FIT AND INSTALL COMPOSITE SIDE PANEL CLIPS?

STEP 6

Once all 8x Clips are securely fixed to the panel. The next step is clipping the panel into the outer frame. Before pushing the panel into the frame, sit 2x 4mm packers at the bottom between panel and frame. This will keep the panel central within the frame, providing an equal gap all the way around. Push the panel into the outer frame, ensuring the clip sits within the bead groove in the outer frame. Once all clips are located within the bead groove, this is now securely fixed.

