

# The Ultimate

COLLECTION Composite Doors

## Composite Door User Guide



Please leave with homeowner

## Caring for your new Composite Door

You have chosen a high quality GRP Composite Door that is incredibly durable and easy to maintain.

Regular cleaning will ensure it always looks its best.

Here is how to care for each part of your new door:

### 1. Glass

Clean with glass cleaning liquid or warm soapy water and a soft cloth or sponge. Avoid abrasive pads and solvents.

### 2. Frames and panels

These can be easily cleaned with warm soapy water and a soft cloth or sponge. Do not use abrasive pads or solvents as these may scratch or damage the surface. A special, solvent-based UPVC cleaner may be used to remove stubborn dirt and grease.

### 3. Locks, hinges and hardware

Hardware can be cleaned with mild soapy water and a soft cloth. Avoid abrasive pads, solvents or strong polish as they may scratch or damage the hardware. For a smooth opening, lightly oil or lubricate moving parts once or twice a year.

**NOTE: Composite doors are structurally sound and will not bow as a result of any water ingress. However, in order to maintain the door and prevent your door from bowing throughout its long life, the hook locks should always be engaged in their keeps when the door is closed. Failure to engage the locks and close the door on the centre latch only can induce a bow over time. Failure to engage the hooks will therefore invalidate the guarantee against bowing.**

## Locking and unlocking your new door

### 1. Locking the door

Close the door and lift the lever upward. This action will project the compression bolts and hooks into their respective keeps.

Rotate the key one revolution. The door is now fully weathered and secure.

### 2. Unlocking lever / lever handle door

Insert the key in the cylinder and rotate one revolution. Next, push the lever down to fully retract the compression hooks and bolts, the latch will automatically retract when the lever is depressed.

The procedure is the same for internal and external operation.

### 3. Unlocking lever / lever off-set handle door

To unlock the door from inside when a lever / lever offset handle is fitted; simply follow the procedure as in point 2 above.

To unlock the door from outside, insert the key and rotate, this will unlock the gearing. Depress the lever, which will withdraw the compression bolts and hooks, the latch will not operate at this point.

To gain access, simply turn the key again in the same direction as to unlock the gearing, the latch will remain withdrawn whilst you hold the key in the rotated position.

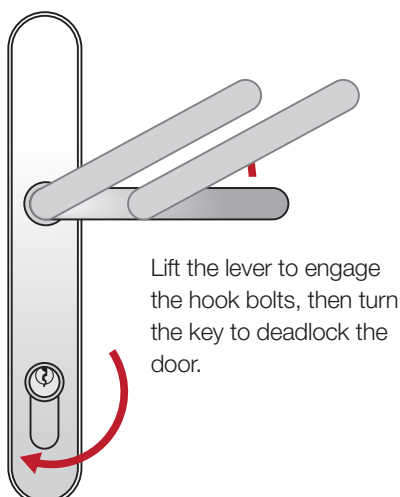
### Optimum security

Optimum security can only be achieved when both compression bolts and hooks are engaged in their respective keeps and the gearing is deadlocked with the key. Closing the door when using the lever / offset lever handle will provide an instant security benefit but this does not constitute high security locking of the system.

To ensure the total benefits of the locking system are employed, follow the operation instructions set out above.

## Door lock / handle operation

To Lock:



To Unlock

