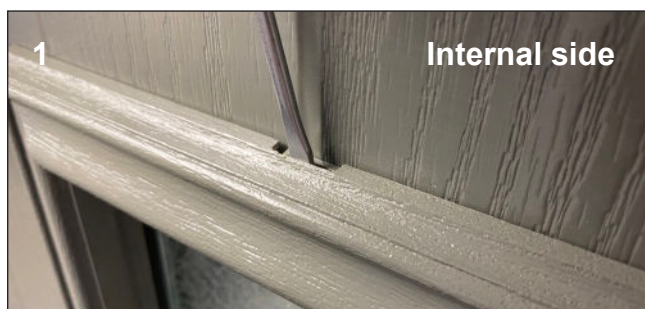


Installation Tips



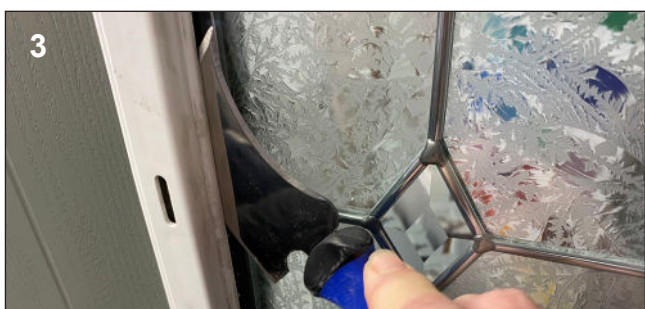
Changing the decorative or textured glass



Insert a flat headed screwdriver into the prising slot and gently twist clockwise until the internal cassette starts to come away.



Remove the screws and inner mid piece. Ensure the glass is supported and does not drop out.



Use a moon knife to separate the glass from the gel tape on BOTH internal and external sides. Remove all original gel tape and ensure the area is clean.



Remove all original gel tape and place new gel tape around the internal cassette.



Place new gel tape around the retaining external cassette, remove the gel tape cover and gently position the glass against the external cassette.



Fix the inner mid piece into position and insert all screws. Clip the outer cassette onto the inner mid piece.

PLEASE NOTE: Always clean with warm soapy water (do not use any detergents, acid/alkaline or solvent based materials), use a wet cotton cloth using light pressure.